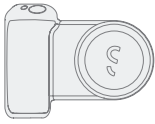
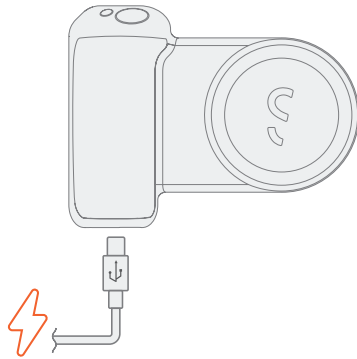


What's in the box?
Contenu de la boîte?
Verpackungsinhalt?
¿Contenido de la caja?

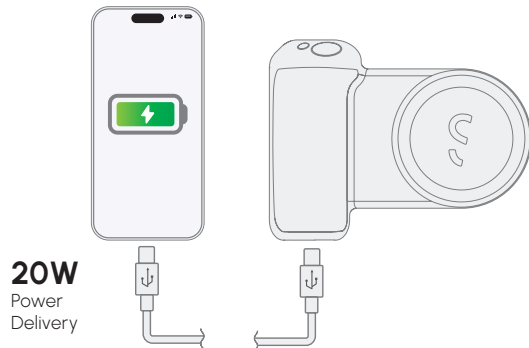


SnapGrip Pro

Charging the SnapGrip Pro
Chargement de la télécommande Bluetooth
Aufladen der Bluetooth-Fernbedienung
Cargar el mando a distancia Bluetooth



Charge Devices via USB-C PD
Chargement des appareils via USB-C PD
Aufladen von Geräten über USB-C PD
Carga de dispositivos mediante USB-C PD



20W
 Power
 Delivery

FCC FCC FCC | IC: 30569-SAA03

This device complies with Part 15 of the FCC Rules and with RSS-247 of Industry Canada. Operation is subject to the following two conditions: (1) This device may not cause harmful interference, and (2) this device must accept any interference received, including interference that may cause undesired operation.

Le présent appareil est conforme aux CNR d'Industrie Canada applicables aux appareils radio exempts de licence. L'exploitation est autorisée aux deux conditions suivantes : (1) l'appareil ne doit pas produire de brouillage, et (2) l'utilisateur de l'appareil doit accepter tout brouillage radioélectrique subi, même si le brouillage est susceptible d'en compromettre le fonctionnement.

The product complies with the Canada portable RF exposure limit set forth for an uncontrolled environment and are safe for intended operation as described in this manual. The further RF exposure reduction can be achieved if the product can be kept as far as possible from the user body or set the device to lower output power if such function is available.

Le produit est conforme aux limites d'exposition pour les appareils portables RF pour les États-Unis et le Canada établies pour un environnement non contrôlé. Le produit est sûr pour un fonctionnement tel que décrit dans ce manuel. La réduction aux expositions RF peut être augmentée si l'appareil peut être conservé aussi loin que possible du corps de l'utilisateur ou que le dispositif est réglé sur la puissance de sortie la plus faible si une telle fonction est disponible.

The device has been evaluated to meet general RF exposure requirement. The device can be used in portable exposure condition without restriction Federal Communication Commission (FCC) Radiation.

NOTE: The manufacturer is not responsible for any radio or TV interference caused by unauthorized modifications or changes to this equipment. Such modifications or changes could void the user's authority to operate the equipment.

NOTE: This equipment has been tested and found to comply with the limits for a Class B digital device, pursuant to part 15 of the FCC Rules. These limits are designed to provide reasonable protection against harmful interference in a residential installation. This equipment generates uses and can radiate radio frequency energy and, if not installed and used in accordance with the instructions, may cause harmful interference to radio communications. However, there is no guarantee that interference will not occur in a particular installation. If this equipment does cause harmful interference to radio or television reception, which can be determined by turning the equipment off and on, the user is encouraged to try to correct the interference by one or more of the following measures:

- Reorient or relocate the receiving antenna.
- Increase the separation between the equipment and receiver.
- Connect the equipment into an outlet on a circuit different from that to which the receiver is connected.

Consult the dealer or an experienced radio/TV technician for help.

FCC Caution: Any changes or modifications not expressly approved by the party responsible for compliance could void the user's authority to operate this equipment.



WEEE Information

According to the WEEE (Waste Electrical and Electronic Equipment) Directive, do not dispose of this product as household waste or commercial waste. Waste electrical and electronic equipment should be appropriately collected and recycled as required by practices established for your country. For information on recycling of this product, please contact your local authorities, your household waste disposal service, or the shop where you purchased the product.

CE **DECLARATION OF CONFORMITY**

Shiftcam declares that this product is in compliance with the essential requirements and other relevant provisions of applicable CE directives. For Europe, a copy of the Declaration of Conformity this product may be obtained by visiting www.ShiftCam.com

SHIFTCAM

H410-414, Block B, PMQ, 35 Aberdeen Street, Central, HongKong | hello@ShiftCam.com
www.ShiftCam.com

SnapGrip Pro

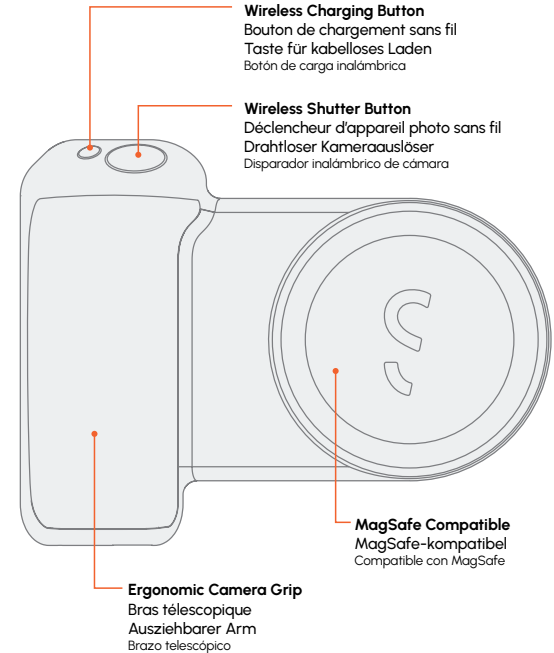
S-AA03

Quick Start Guide
Guide de démarrage rapide
Schnellstart-Anleitung
Guía rápida de inicio



Exclusive How-To Videos
 Trucs et astuces
 Tipps und Tricks
 Consejos y recomendaciones

Overview
Vue d'ensemble
Details
Visión general



Attach SnapGrip Pro

Fixer le SnapGrip Pro

SnapGrip Pro anbringen

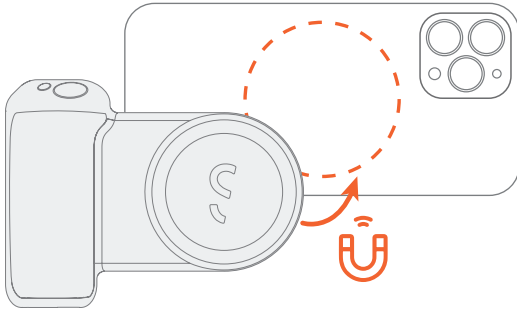
Fijar SnapGrip Pro.

iPhone 12 series or later, or with a MagSafe case

iPhone série 12 ou ultérieur, ou avec un étui MagSafe

Ab iPhone 12-Serie mit integriertem MagSafe oder mit spezieller MagSafe-Hülle

iPhone serie 12 o posterior, o con una funda MagSafe

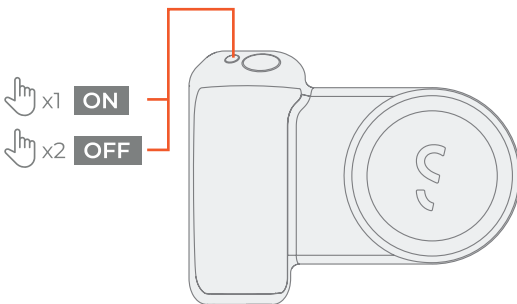


Wireless Charging on/off

Recharge sans fil activé/désactivé

Kabelloses Laden ein/ausschalten

Carga inalámbrica activada/desactivada

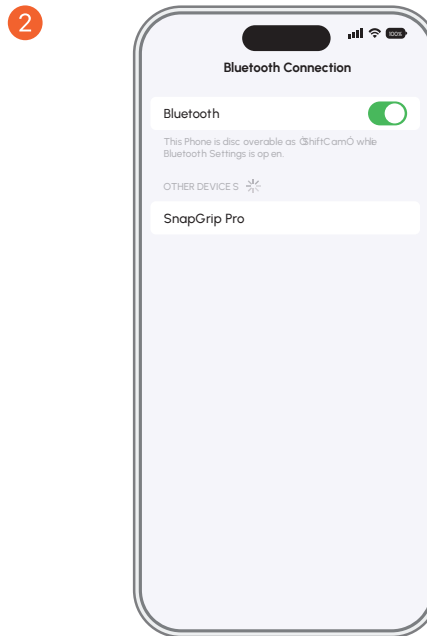
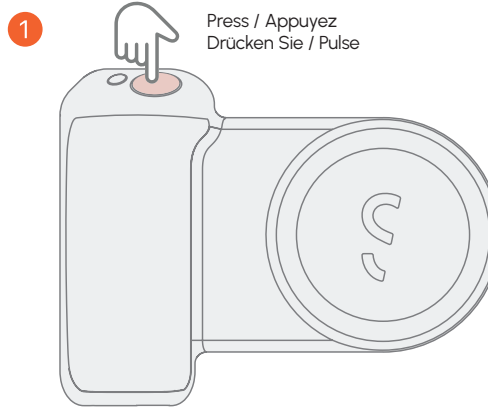


Connect Wireless Shutter

Connecter l'obturateur sans fil

Drahtlosen Auslöser anschließen

Conectar el obturador inalámbrico

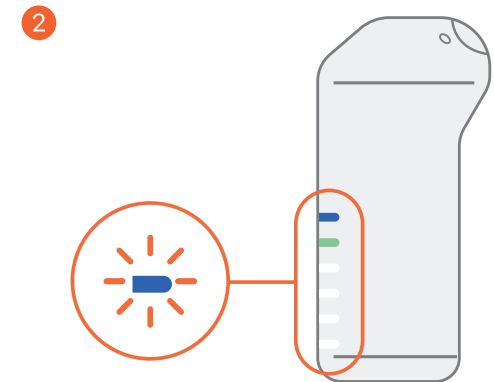
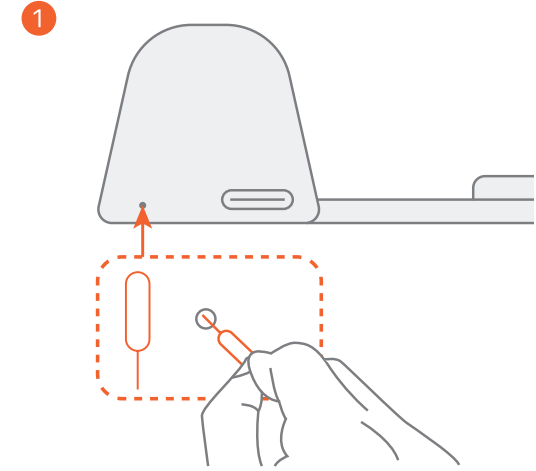


Reset Connection

Réinitialisation de la connexion

Verbindung zurücksetzen

Restablecer conexión



✓ Blinking Light
Lumière clignotante
Blinkendes Licht
Luz intermitente